

**LEGEND**

- SITE BOUNDARY
- ▶ FLOW PATHS
- EXTENSION CITED FOR DEMOLITION

NOTE:  
200mm contours shown, based on LiDAR information provided by Scottish Borders Council

Rev	Description	By	App	Date



**Terrenus Land & Water Ltd**  
 Prospect Business Centre,  
 Hamilton International Park,  
 G72 0BN  
[www.terrenus.co.uk](http://www.terrenus.co.uk)

Client  
 AUSTIN TRAVEL

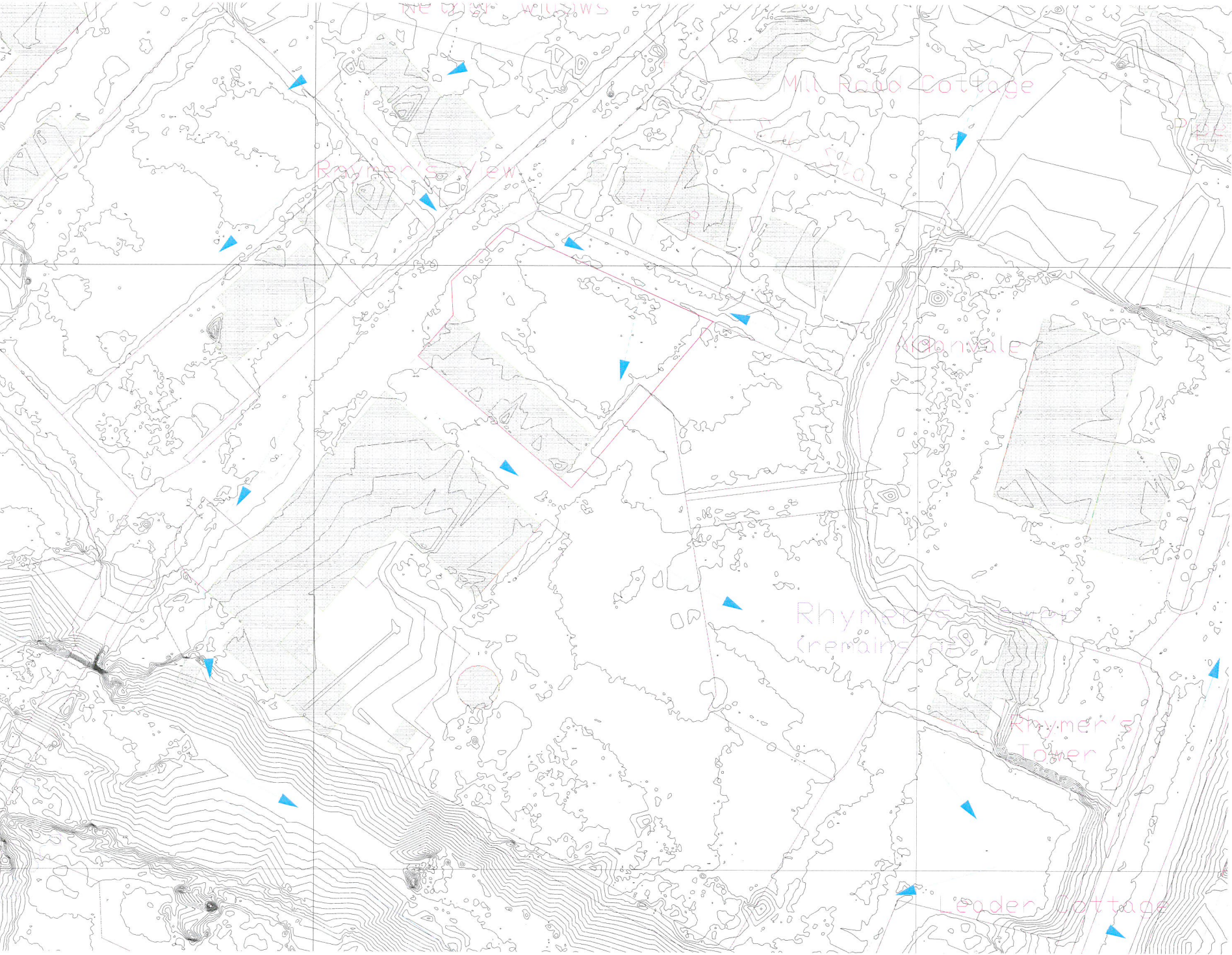
Project  
 RHYMERS MILL,  
 EARLSTON

Drawing Title  
 EXISTING FLOW PATHS

Drawn DA    Checked WH    Approved WH

Date 31-01-18    Scale NTS    1601-205-005

DO NOT SCALE



LEGEND

- SITE BOUNDARY
- ▶ FLOW PATHS

NOTE:  
 200mm contours shown, based on LIDAR information provided by Scottish Borders Council

Rev	Description	By	App	Date



**Terrenus Land & Water Ltd**  
 Prospect Business Centre,  
 Hamilton International Park,  
 G72 0BN  
 www.terrenus.co.uk

Clients:  
 AUSTIN TRAVEL

Project:  
 RHYMERS MILL,  
 EARLSTON

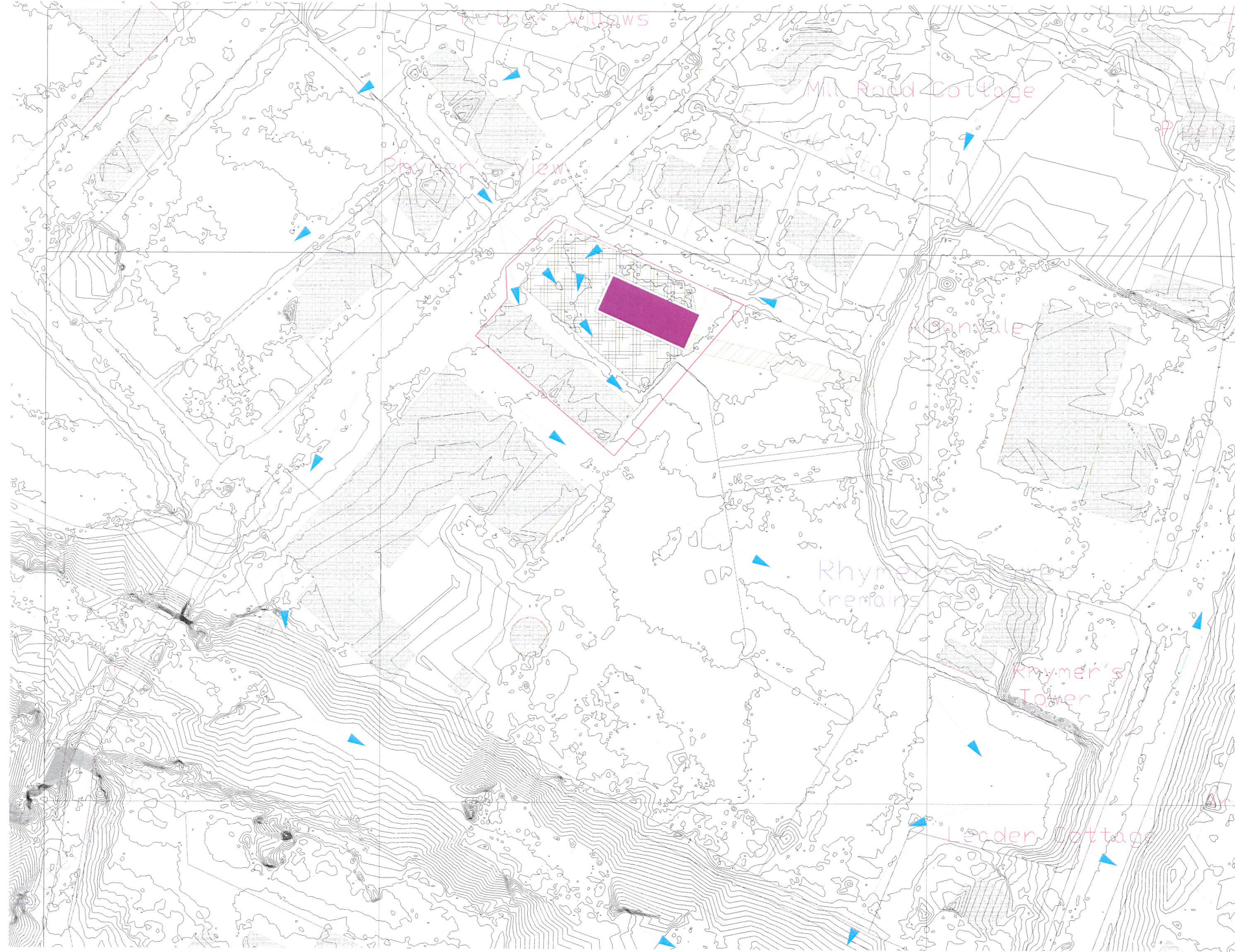
Drawing title:  
 PREDICTED FLOW PATHS  
 AFTER DEMOLITION OF  
 EXTENSION

Drawn DA    Checked WH    Approved WH

Date 31-01-18    Scale NTS    1601-205-006

ORIGINAL A3

DO NOT SCALE



- LEGEND**
- : SITE BOUNDARY
  - ▶ : FLOW PATHS
  - : PROPOSED BUILDING
  - : PROPOSED GARDEN  
- profiled to allow freeflow of surface water to the south.
  - : SAFE ACCESS / EGRESS ROUTE

**NOTE:**  
200mm contours shown, based on LiDAR information provided by Scottish Borders Council

Rev	Description	By	App	Date



**Terrenus Land & Water Ltd**  
Prospect Business Centre,  
Hamilton International Park,  
G72 0BN  
[www.terrenus.co.uk](http://www.terrenus.co.uk)

Client: AUSTIN TRAVEL

Project: RHYMERS MILL, EARLSTON

Drawing Title: PREDICTED FLOW PATHS AFTER DEVELOPMENT COMPLETION

Drawn: DA    Checked: WH    Approved: WH

Date: 31-01-18    Scale: NTS    1601-205-007

ORIGINAL A3